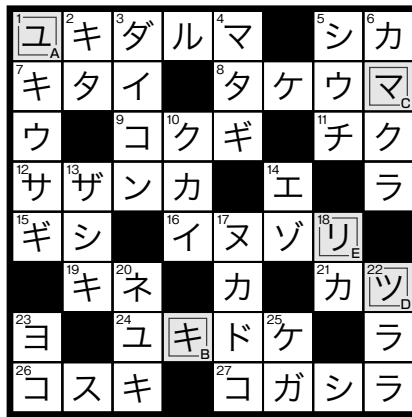
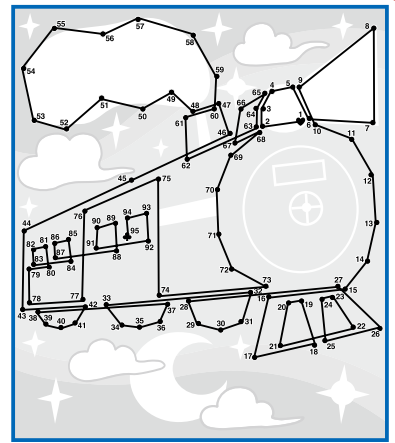


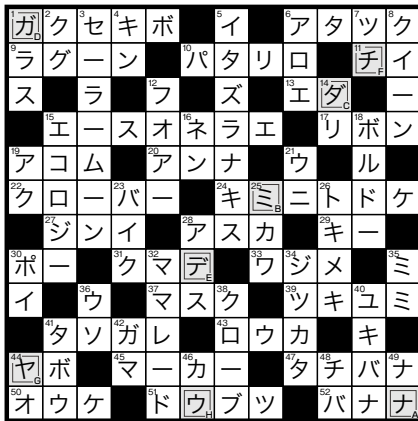
Q 11
リヨウマガユク
(電馬がゆく)



Q 10
ユキマツリ
(雪まつり)



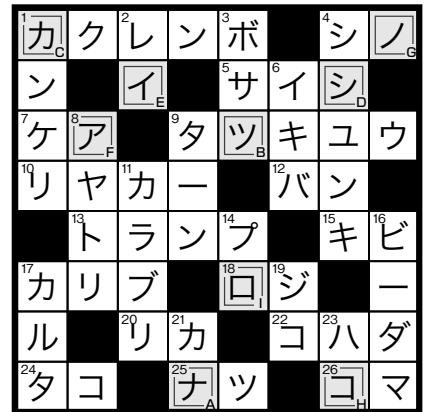
Q 9
C



Q 14
ナミタガデチャウ
(涙が出ちゃう)



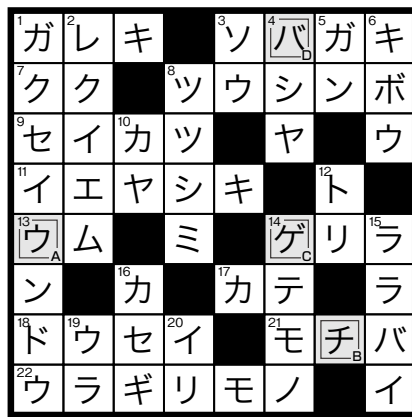
Q 13
B



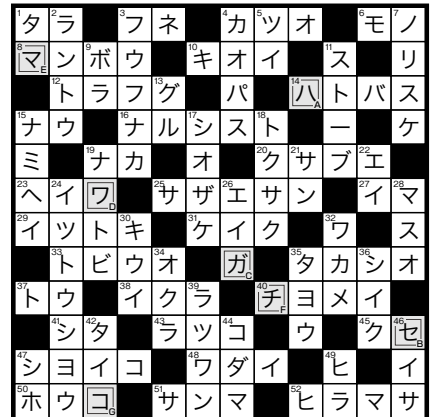
Q 12
ナツカシアノコロ
(懐かしいあのころ)



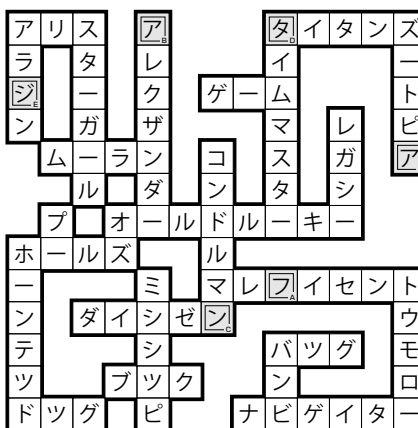
Q 17
A



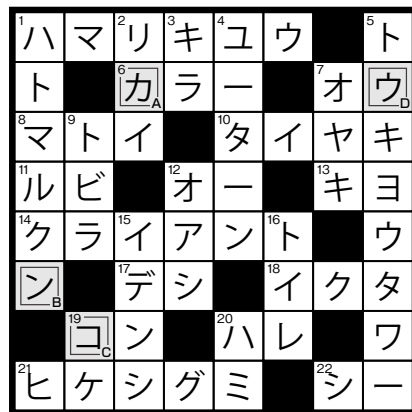
Q 16
ウチゲバ
(内ゲバ)



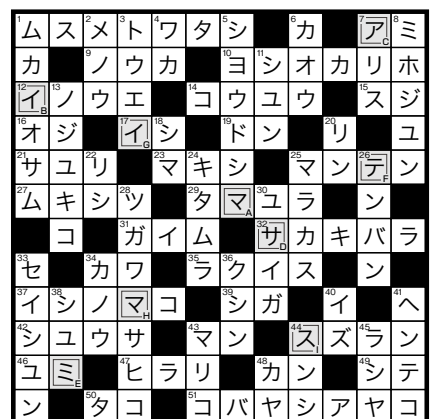
Q 15
ハセガワマチコ
(長谷川町子)



Q 20
ファンタジア
(ファンタジア)



Q 19
カンコウ
(観光)



Q 18
マイアサミティマス
(毎朝見えています)